



# LEAVING CERT APPLIED

ST LOUIS CS



# WHAT IS LEAVING CERT APPLIED?



- The Leaving Certificate Applied is a self-contained two-year programme
- It is aimed at preparing students for adult and working life.
- The two-year programme consists of four blocks called sessions. The student's achievements are credited in each of these sessions.



- 

# WHATS DIFFERENT ABOUT LEAVING CERT APPLIED?

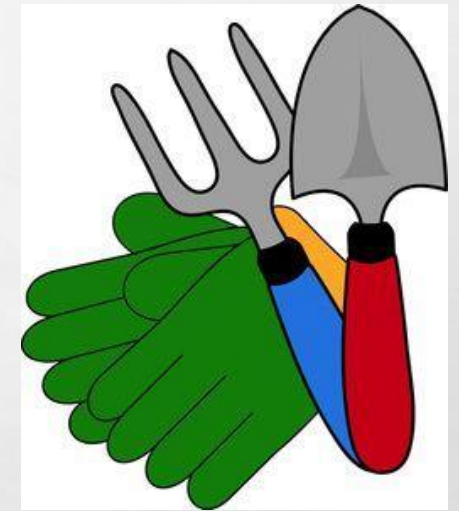
- CONTINUOUS ASSESSMENT
- COURSEWORK IS ASSESSED OVER 2 YEAR AS THEY GO ALONG
- WORK EXPERIENCE IS A SIGNIFICANT COMPONENT OF THE PROGRAMME
- STUDENTS SPEND FOUR DAYS IN SCHOOL FOLLOWING THEIR TIMETABLE AND FRIDAY OF EACH WEEK IS SPENT WITH AN EMPLOYER





# SUBJECTS

- English and Communications
- Vocational Preparation and Guidance VPG
- Mathematical Applications
- Information and Communications Technology (I.C.T.)
- Agriculture and Horticulture
- Engineering



- Art
- Social Education
- Leisure and Recreation PE
- Religion
- Gaeilge in year 1
- Spanish in year 2
- \*\*\*students can retain exemptions from Irish





# WORK EXPERIENCE

- Work experience takes place every Friday
- 4 work placements over the 2 years





# THE CERTIFICATE AWARDED

Certificate awarded at three levels

Pass                      60-69 %      (120 - 139 credits)

Merit                      70-84 %      (140 - 169 credits)

Distinction              85-100 %      (170 - 200 credits)







## Assessment

Students are awarded credits for...

Satisfactory completion of Key assignments	62 credits (31%)
7 Student tasks	70 credits (35%)
Final examinations	68 credits (34%)
<b>Total</b>	<b>200 credits (100%)</b>

- **90% attendance is a requirement for successful programme completion**

# TASKS

- General Education Task
- VPG Task
- 2 Vocational Education Tasks in **Ag/Hort and Engineering**
- Personal Reflection Task
- Contemporary Issues Task
- Practical Achievement Task





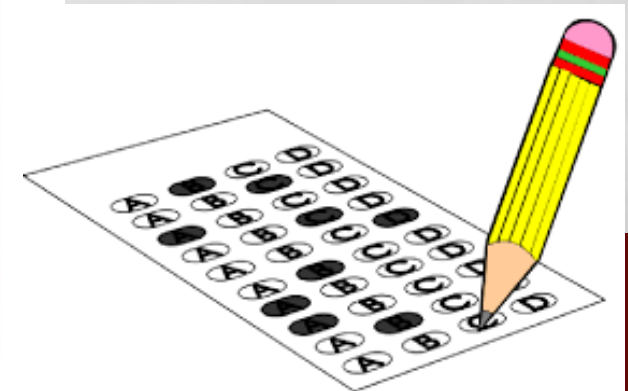
# BLACKSMITH WORKSHOP



# Final Examinations



Area	Credits
<b>English &amp; Communication</b> Oral and written incorporating audio visual	<b>12</b>
<b>Vocational Specialisms (x2)</b> Practical and written - practical briefs issued in advance (see next slide for details)	<b>12 each</b>
<b>Languages (x2)</b> Oral and written incorporating aural	<b>6 each</b>
<b>Social Education</b> Written incorporating audio	<b>10</b>
<b>Mathematical Applications</b> Written - research topic (Q.2 issued in advance)	<b>10</b>
<b>Total</b>	<b>68</b>





# AFTER LCA?



- STUDENTS WHO DO LCA CAN CONTINUE ON TO POST LEAVING CERT COURSE (PLC)
- APPRENTICESHIPS INCLUDING ESB, BUS ÉIREANN....
- WORLD OF WORK
- CREDIT UNION, GARDA, DEFENCE FORCES, HAIRDRESSING, BEAUTY THERAPY, CHEF, CHILDCARE, RETAIL, CATERING, HOSPITALITY, PLUMBING, CARPENTRY, PAINTING, ENGINEERING, CONSTRUCTION.....ENDLESS OPTIONS



# FOR MORE INFORMATION

- [www.pdst.ie/lca](http://www.pdst.ie/lca)
- **Contact me directly**

**Thank you for your attention**