



St. Louis Community School,  
Kiltimagh

# Guidance Counsellor



## *Subject Choices*

**Ms Walburg Ruane**

23/01/2018

Walburg Ruane Guidance Counsellor



# St. Louis Community School, Kiltimagh

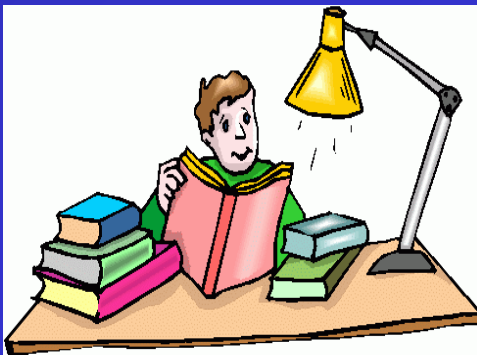


- CORE (4)
- OPTIONS (5)
- EXAMINATION (9)
- NON EXAMINATION



# St. Louis Community School, Kiltimagh

## • LINKS TO SENIOR CYCLE



© Can Stock Photo



# St. Louis Community School, Kiltimagh

- 4 Core Subjects
- 5 Choice Subjects
- 9 Subjects @ Junior Cert
- Additional Subjects



St. Louis Community School,  
Kiltimagh

‘CORE’

# Examination Subjects

- English
- Irish
- Mathematics



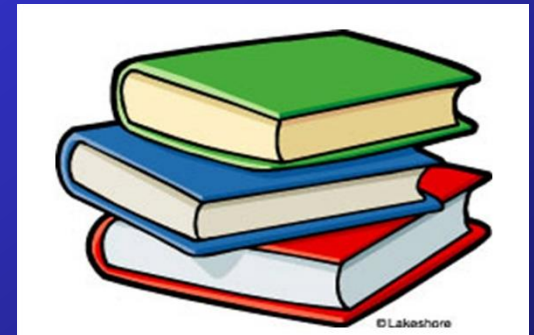


St. Louis Community School,  
Kiltimagh

‘CORE’

# Examination Subjects

- Religion





St. Louis Community School,  
Kiltimagh

**‘CORE’**

# Non Examination Subjects

- CSPE (Civil Social Political Education)
- SPHE (Social Personal & Health Education)
- PE - Physical Education



St. Louis Community School,  
Kiltimagh

# ‘Options’ ‘HUMANITIES’

- French
- Spanish







# St. Louis Community School, Kiltimagh

## ‘IMPORTANT’

- Entry Requirement for many Irish Universities  
(NUIG, UC, DCU, UCD, Maynooth)



# St. Louis Community School, Kiltimagh

## There are Exceptions'

- University of Limerick
- Trinity College Dublin
- Science, Nursing,  
Engineering & Primary  
Teaching



St. Louis Community School,  
Kiltimagh

# ‘Humanities’

- History
- Geography

Link to History &  
Geography





St. Louis Community School,  
Kiltimagh

# ‘Options’ SCIENCE



- Science
- Linked to 5 Senior  
Cycle Subjects



# St. Louis Community School, Kiltimagh

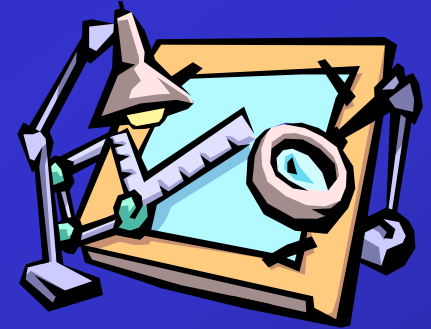
- Biology
- Chemistry
- Physics
- Agricultural Science
- Physics & Chemistry





St. Louis Community School,  
Kiltimagh

# ‘Options’ ‘ARTISTIC’



- Technical Graphics links to  
**Design & Communication  
Graphics**



# St. Louis Community School, Kiltimagh



- Art links on to

## ART

- Music links to

## MUSIC





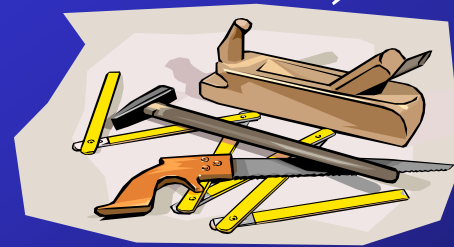
St. Louis Community School,

Kiltimagh

‘Options’

‘PRACTICAL’

- Materials Technology  
Wood (Woodwork)  
links to

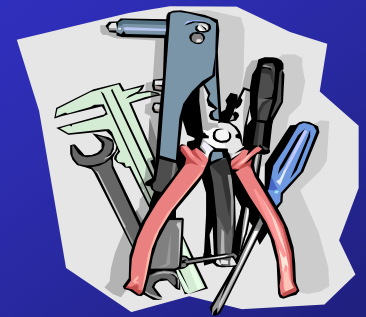






# St. Louis Community School, Kiltimagh

- Materials Technology  
Metal (Metalwork) links  
to  
**Engineering**





# St. Louis Community School, Kiltimagh

- Technology links onto  
**Engineering &  
Construction Studies**



St. Louis Community School,  
Kiltimagh

‘Options’  
‘SOCIAL’



- Home Economics links  
to

# Home Economics



St. Louis Community School,  
Kiltimagh

# ‘Options’ ‘BUSINESS’



- Business Studies links to  
**Business & Accounting**



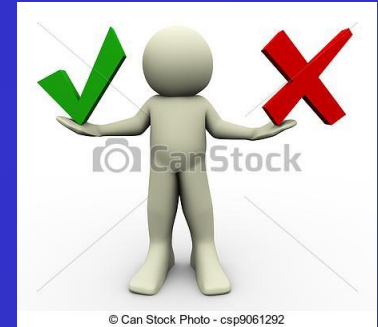
# St. Louis Community School, Kiltimagh

## RECOMMENDATIONS

- Keep Options Open (Science & Language)
- Choose 5 subjects you like



# St. Louis Community School, Kiltimagh



## 'Order of Preference'

1. Science
2. Language
3. \_\_\_\_\_ Humanities category (History/Geography)
4. \_\_\_\_\_ Practical category  
(Metalwork/Woodwork/Technology)
5. \_\_\_\_\_ Social category (Home Economics)
6. \_\_\_\_\_ Artistic category (Art, Tech Graphics, Music)
7. \_\_\_\_\_ Business