



St. Louis Community School,
Kiltimagh

Guidance Counsellor



Subject Choices

Ms Walburg Ruane

23/01/2018

Walburg Ruane Guidance Counsellor



St. Louis Community School, Kiltimagh

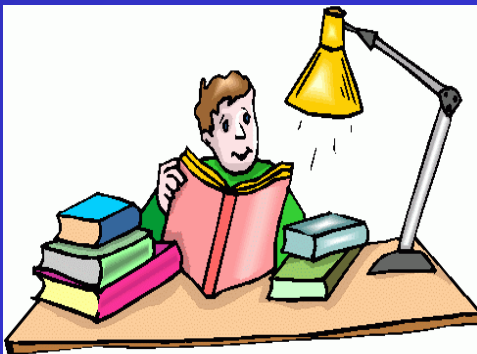


- CORE (4)
- OPTIONS (5)
- EXAMINATION (9)
- NON EXAMINATION



St. Louis Community School, Kiltimagh

• LINKS TO SENIOR CYCLE



© Can Stock Photo



St. Louis Community School, Kiltimagh

- 4 Core Subjects
- 5 Choice Subjects
- 9 Subjects @ Junior Cert
- Additional Subjects



St. Louis Community School,
Kiltimagh

‘CORE’

Examination Subjects

- English
- Irish
- Mathematics



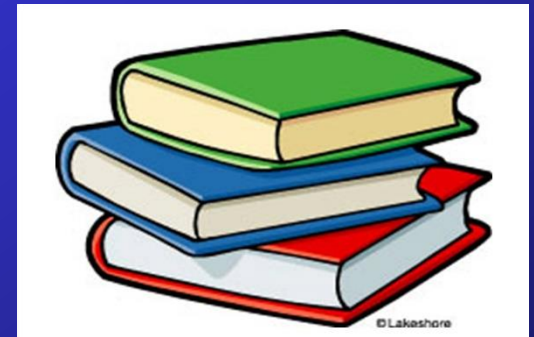


St. Louis Community School,
Kiltimagh

‘CORE’

Examination Subjects

- Religion





St. Louis Community School,
Kiltimagh

‘CORE’

Non Examination Subjects

- CSPE (Civil Social Political Education)
- SPHE (Social Personal & Health Education)
- PE - Physical Education



St. Louis Community School,
Kiltimagh

‘Options’ ‘HUMANITIES’

- French
- Spanish





St. Louis Community School, Kiltimagh

‘IMPORTANT’

- Entry Requirement for many Irish Universities
(NUIG, UC, DCU, UCD, Maynooth)



St. Louis Community School, Kiltimagh

There are Exceptions'

- University of Limerick
- Trinity College Dublin
- Science, Nursing,
Engineering & Primary
Teaching



St. Louis Community School,
Kiltimagh

‘Humanities’

- History
- Geography

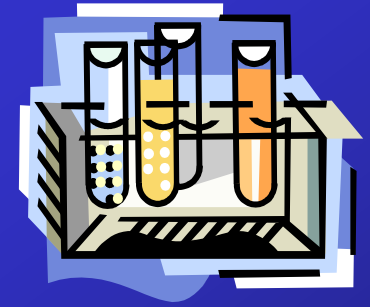
Link to History &
Geography





St. Louis Community School,
Kiltimagh

‘Options’ SCIENCE



- Science
- Linked to 5 Senior
Cycle Subjects



St. Louis Community School, Kiltimagh

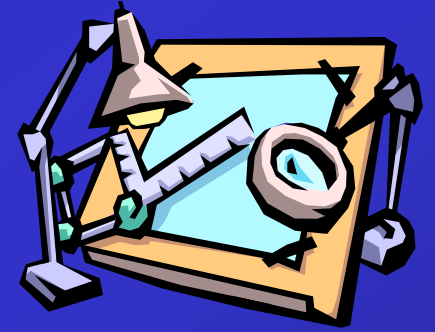
- Biology
- Chemistry
- Physics
- Agricultural Science
- Physics & Chemistry





St. Louis Community School,
Kiltimagh

‘Options’ ‘ARTISTIC’



- Technical Graphics links to
**Design & Communication
Graphics**



St. Louis Community School, Kiltimagh



- Art links on to

ART

- Music links to

MUSIC





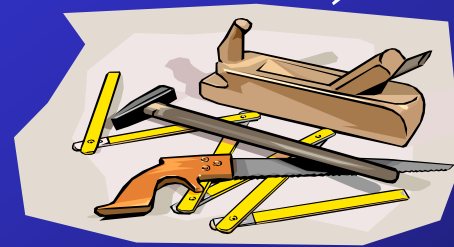
St. Louis Community School,

Kiltimagh

‘Options’

‘PRACTICAL’

- Materials Technology
Wood (Woodwork)
links to

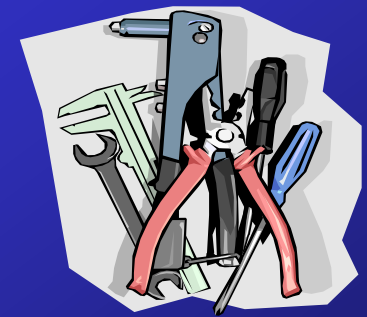




St. Louis Community School, Kiltimagh

- Materials Technology
Metal (Metalwork) links
to

Engineering





St. Louis Community School, Kiltimagh

- Technology links onto
**Engineering &
Construction Studies**



St. Louis Community School,
Kiltimagh

‘Options’
‘SOCIAL’



- Home Economics links
to

Home Economics



St. Louis Community School,
Kiltimagh

‘Options’ ‘BUSINESS’



- Business Studies links to
Business & Accounting



St. Louis Community School, Kiltimagh

RECOMMENDATIONS

- Keep Options Open (Science & Language)
- Choose 5 subjects you like



St. Louis Community School, Kiltimagh



'Order of Preference'

1. Science
2. Language
3. _____ Humanities category (History/Geography)
4. _____ Practical category
(Metalwork/Woodwork/Technology)
5. _____ Social category (Home Economics)
6. _____ Artistic category (Art, Tech Graphics, Music)
7. _____ Business